

A scenic view of a white building with arches and a courtyard in Ischia, Italy. The building features a series of white arches and a courtyard with a brick-paved area and a green lawn. A large circular logo is overlaid on the image, containing the text "BOTANIA RELAIS & SPA" and "Ischia, Italy".

**BOTANIA**  
RELAIS & SPA

Ischia, Italy

Botania Relais & Spa is located on the small, idyllic island of Ischia off the coast of Naples, Italy. The Relais consists of 40 rooms spread across 10 buildings of typically Mediterranean whitewashed architecture, beautifully set in 3-hectare Mediterranean gardens. Natural materials, including stone and wooden beams, are everywhere and are featured in each accommodation, with balconies or terraces overlooking the gardens. A few of the accommodations also have sea views.

The resort features many luxurious amenities such as an indoor thermal pool, three delectable in-house restaurants including the Michelin GREEN STAR rated vegetarian restaurant, Il Mirto, and a newly constructed spa. An amphitheater overlooking the ocean features concerts and shows during the season.

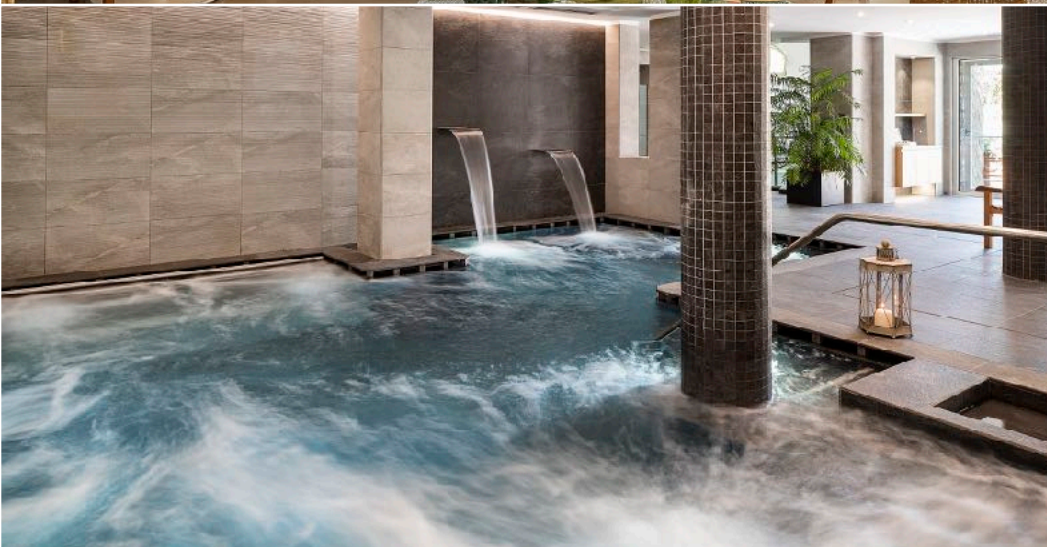
Botania offers environmentally friendly facilities in harmony with the community. The management, aware of the importance of the protection of the environment, has implemented "environmentally friendly policies", limiting waste and saving water and energy.

Open April through October to guests over 10 years of age.





large gazebo



# FACILITIES & AMENITIES

- 40 unique guest rooms and suites in various categories, some featuring balconies, terraces, sea views, and mini-Jacuzzi pools
- Complimentary Wi-Fi
- 24 hour concierge services
- Gym, Yoga Classes, and Nature Trails
- Multi-lingual staff
- One outdoor swimming pool and two indoor pools with hydromassage
- Terrace with sun-beds
- Resort gardens and picturesque relaxation corners
- Garden pools set in the hills
- Newly constructed Garden spa offering body treatments and massages
- Shuttle bus to and from the beach and the center of nearby town of Lacco Ameno
- All rooms outfitted with mini-bar and complimentary soft-drinks
- Satellite TV
- On-site classes: cooking, ceramics, etc.



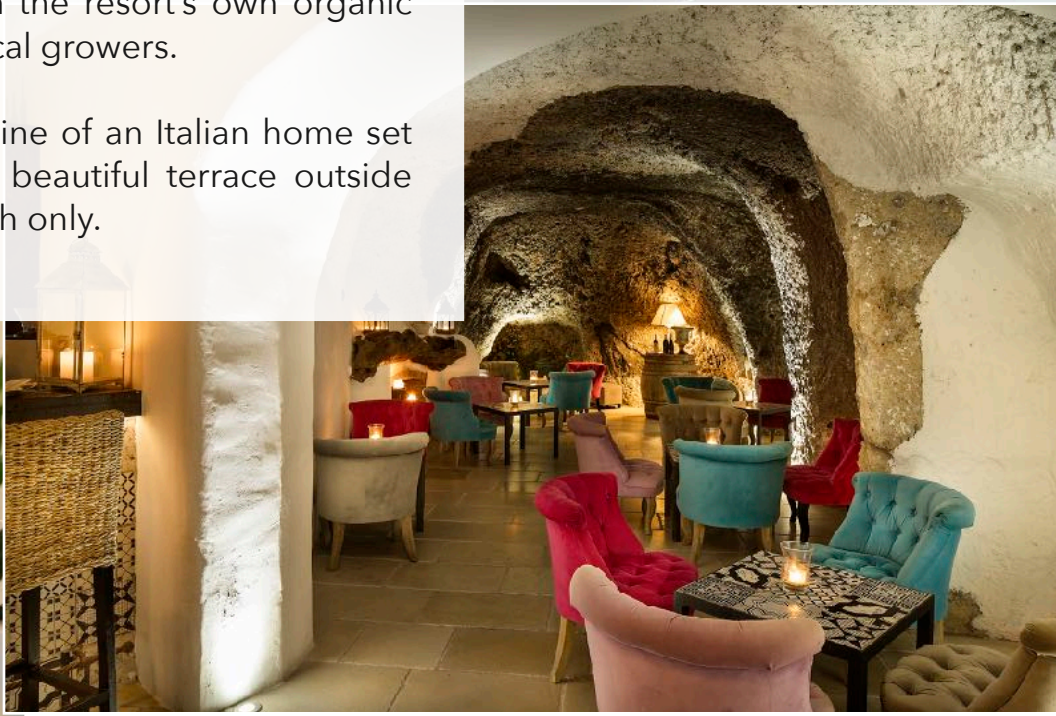
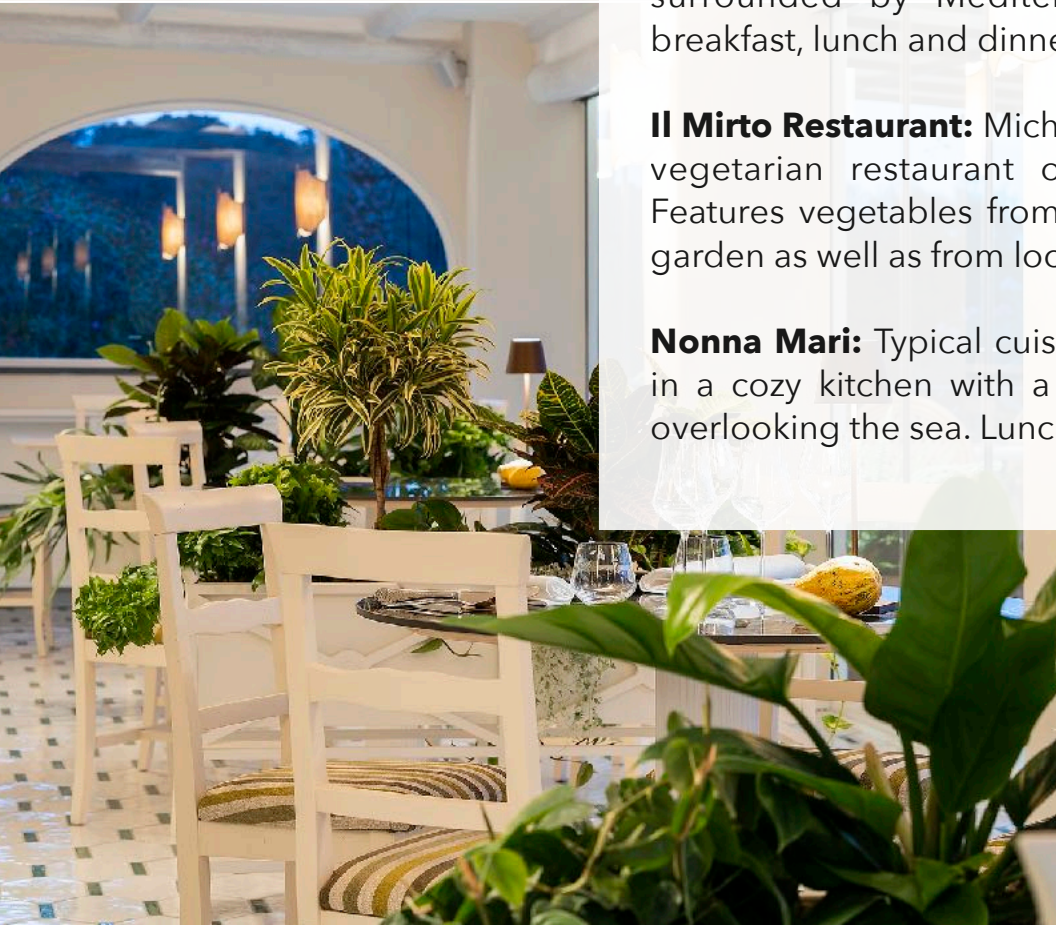
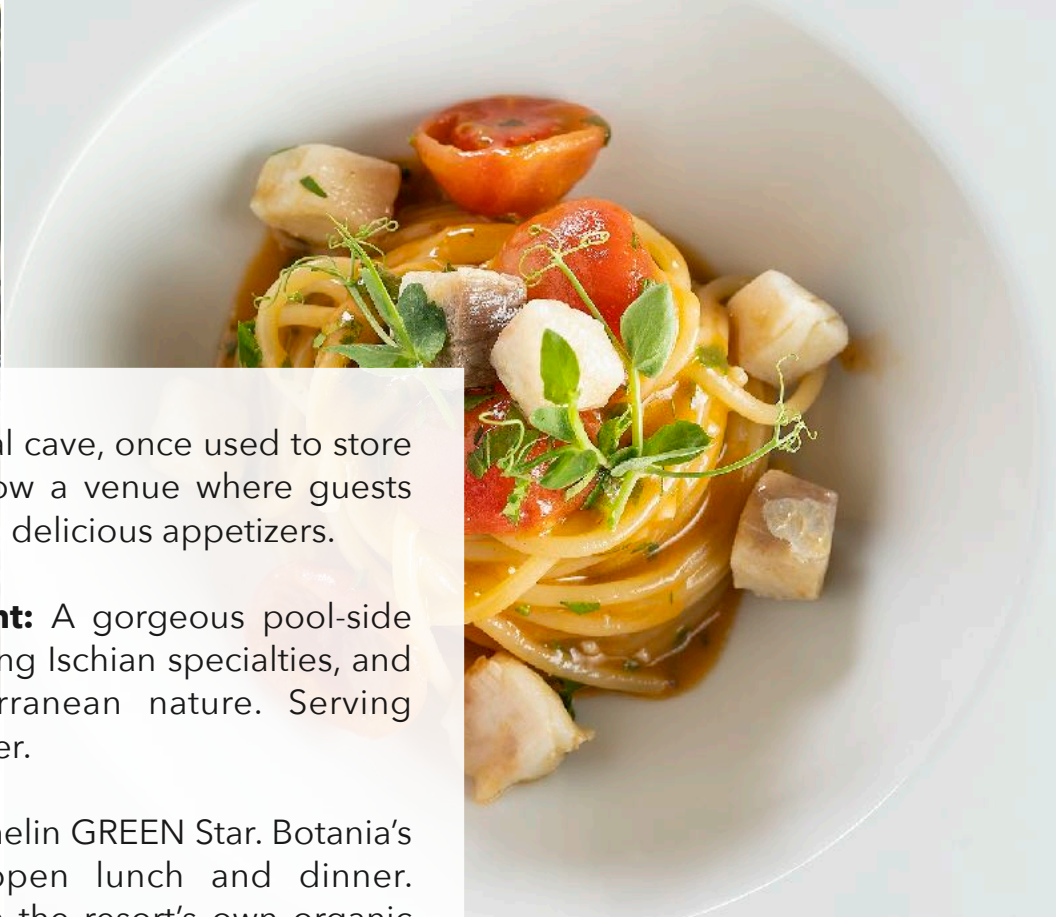


**Bar "La Grotta":** A natural cave, once used to store wine for the estate, is now a venue where guests can enjoy a beverage and delicious appetizers.

**Il Corbezzolo Restaurant:** A gorgeous pool-side dining experience featuring Ischian specialties, and surrounded by Mediterranean nature. Serving breakfast, lunch and dinner.

**Il Mirto Restaurant:** Michelin GREEN Star. Botania's vegetarian restaurant open lunch and dinner. Features vegetables from the resort's own organic garden as well as from local growers.

**Nonna Mari:** Typical cuisine of an Italian home set in a cozy kitchen with a beautiful terrace outside overlooking the sea. Lunch only.





Deluxe Room

- **Superior Rooms:** Terrace with a garden view
- **Premium Rooms:** Furnished terrace with garden view
- **Deluxe Rooms:** Spacious room with garden view terrace.
- **Master with Jacuzzi Pool:** Sitting area, garden views, and large terrace with Jacuzzi
- **Junior Suites:** Large outdoor spaces in the shade of a loggia tree.
- **Junior Jacuzzi Suite:** Living room, garden view, and rooftop terrace with Jacuzzi
- **Suite Lavanda:** Living room, garden view, and terrace overlooking garden.
- **Suite Gelsomino:** Bedroom, living room, two bathrooms, large terrace, and private living room with large terrace with Jacuzzi and sea view.
- **Suite Ortensia:** Two bedrooms (double and twin beds), two terraces, a large living room, and Jacuzzi pool on a large sea view terrace. Ideal for families. (Pictured).





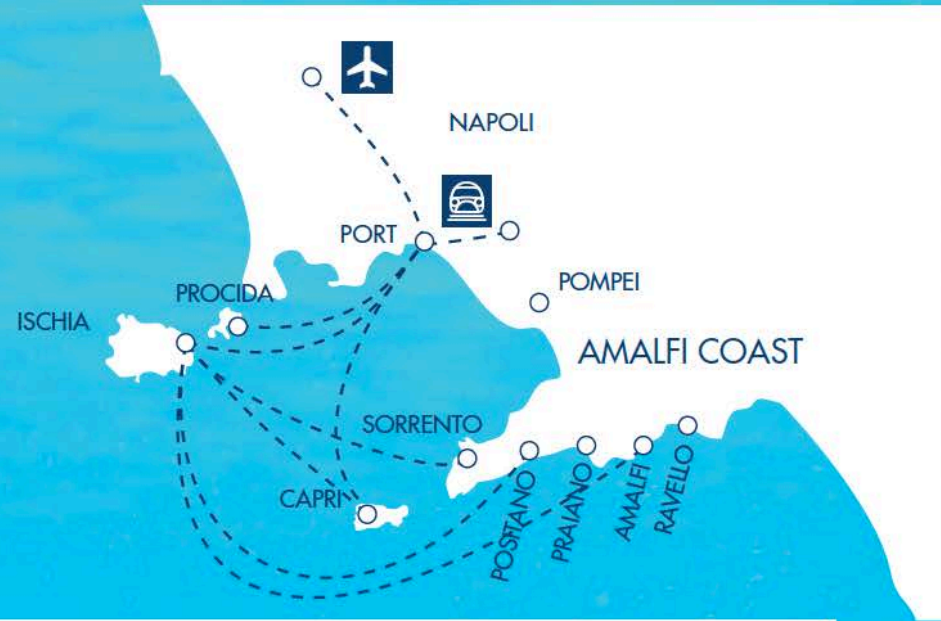


# WHERE WE ARE

## ITALY



## ISCHIA ISLAND



## JOURNEY BY HYDROFOIL FROM OTHER PLACES

FROM **NAPLES** TO ISCHIA = 1h

FROM **CAPRI** TO ISCHIA = 1h 20"

FROM **AMALFI** TO ISCHIA = 1h 30"

FROM **POSITANO** TO ISCHIA = 1h 20"

## ISLAND OF ISCHIA



## HOW TO REACH THE OTHER PLACES BY HYDROFOIL

FROM **ISCHIA** ISLAND TO:

NAPOLI = 1h

PROCIDA = 10"

CAPRI = 1h 20"

AMALFI = 1h 30"

POSITANO = 1h 20"

PONZA = 2h 40"

VENTOTENE = 2h 20"



